

SIDE MAGAZINE

luglio agosto 2011

NATO A LONDRA NEL 1959, JASPER MORRISON SI DISTINGUE NEL PANORAMA DEL DESIGN MONDIALE PER IL SUO STILE PULITO ED ESSENZIALE. DA PIÙ DI VENT'ANNI COLLABORA CON LE MAGGIORI AZIENDE DEL SETTORE, TRA CUI VITRA, ALIAS, FLOS, CAPPELLINI E MAGIS.

Da che cosa trae maggiore ispirazione?

Tengo sempre gli occhi ben aperti, specialmente nei luoghi pubblici e negli spazi dove c'è molta gente, o quando viaggio. Sono molto curioso, mi piace osservare le persone mentre fanno gesti comuni, ad esempio quando stanno sedute al tavolino di un bar a bere un caffè. Guardo come interagiscono tra di loro o con gli oggetti e alcuni particolari si fissano nella mia mente. Poi, quando mi siedo e progetto, tutti i dettagli riaffiorano e io li combino in libertà, cercando il miglior modo di elaborarli e utilizzarli per i miei scopi.

Quali sono le caratteristiche di un buon "pezzo" di design?

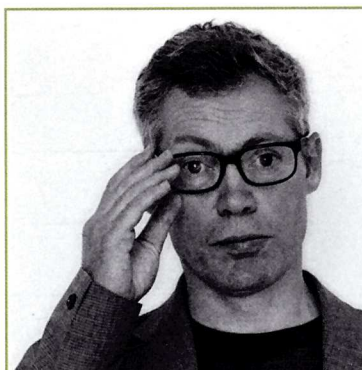
Credo che tutti gli oggetti debbano avere "carattere", come le persone. Inoltre devono avere un'estetica interessante, che si faccia notare, ma con discrezione. Gli arredi con una forma troppo fuori dagli schemi non si integrano bene negli spazi e non creano una buona atmosfera.

C'è qualche materiale innovativo con il quale le piacerebbe "sperimentare"?

Ultimamente ci sono molti più materiali a disposizione, a me piace molto il Corian, con cui ho recentemente realizzato un tavolo per un'azienda giapponese.

Mi racconti un suo sogno nel cassetto...

Vorrei disegnare degli arredi che durino nel tempo, continuando ad essere apprezzati. Alcuni miei progetti realizzati venticinque anni fa sono ancora in produzione: questa è una delle cose che mi dà più soddisfazione.



JASPER MORRISON



Sopra, orologio da polso modello R5.5 di Rado. La sedia Tagliatelle nasce da una struttura in metallo sulla quale sono montate delle resistenti cinghie. Una proposta di Alias.

Sedie HAL di Vitra, disponibili in diversi colori e finiture.

Telefono cordless modello DECT DP 01 di Punkt.

Reinterpretazione di uno storico modello anni '20, questo modello di scarpe appartiene alla nuova collezione Together di Camper.

functional and arouse curiosity. Perhaps it is a difficult thing to explain to those who are not in the trade, but behind every piece of furniture, even something that may seem the simplest thing, there are many months of study and development. Let's take the Grifo table lamp for example, my last effort for Artemide. It is a fun, flexible object that moves in space. It makes you want to touch it, almost to play with it... But it is so simple!

JASPER MORRISON

Born in London in 1959, Jasper Morrison sets himself apart on the international design scene owing to his simple, clean style. He has been working with the major firms in the industry, including Vitra, Alias, Flos, Cappellini and Magis, for more than twenty years.

What inspires you most of all?

I always keep my eyes open, especially in public places and in places where there are a lot of people or when I am travelling. I am very curious and I like to watch people while they are carrying out everyday actions; when they are sitting at a table in a bar drinking a cup of coffee, for example. I watch how they interact with each other or with objects and some details stick in my mind. Then, when I sit down and design, all the details come back to mind and I combine them freely, trying to work them out in the best way and use them for my purposes.

What are the features of a good piece of design?

I think that all objects have to have "character", just like people. What's more, they have to have an interesting appearance that attracts attention, but with discretion. Pieces of furniture with shapes that are too out of the ordinary do not integrate well in the spaces and do not create a good atmosphere.

Is there some innovative material that you would like to experiment with?

Lately there are many more materials available. I really like Corian, which I recently used to create a table for a Japanese firm.

Do you have a long-cherished dream?

I would like to design pieces of furniture that last and continue to be appreciated. Some of my designs that I created twenty-five years ago are still being manufactured: that is one of the things that gives me the greatest satisfaction.



JAVIER MARISCAL

The knowledge of an adult combined with the imagination of a child come together in Javier Mariscal, a versatile artist and remarkable designer. Born in Valencia in 1950, he has conquered the world with his fun, colourful style.

What is most important, the appearance or the functionality of furnishings?

In my opinion, functionality is the most important aspect. If a home accessory does not serve any practical purpose, it is a useless object and absolutely without meaning. Appearance always comes second; when I design, it is the aspect I think about at a later stage. Form follows function, even in the table lamp that I developed for Artemide, the gaily coloured Lotek. First I studied its mechanical movement and the touch on/off switch, and then I concentrated on making it colourful, fun and pleasant to look at.

What is your opinion of the use of new materials?

I am very much in favour of using environmentally friendly resources that do not cause pollution, but there must also be a precise interest in this on the part of the companies that the designer comes up against on each occasion. In this regard, I am very proud of the collection of Green chairs that I designed for the Spanish firm, Mobles 114 - chairs made with 100% recycled and recyclable materials. It was a worthy goal.

Your passion for illustration shines through in every object you create...

I'm glad because drawing for me is my main form of expression. I think I prefer drawing my thoughts to putting them into words!

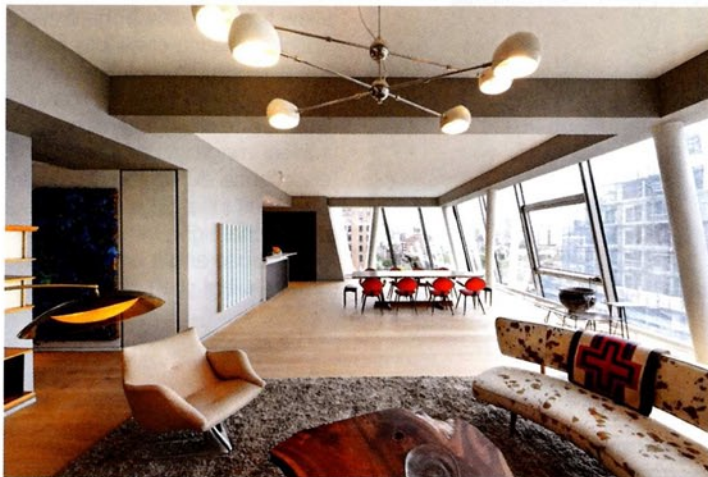


New York... New York page 26

BY MONICA MASCIA LONDON

PHOTO RINZE VAN BRUG

Just a few steps from the Hudson River, on the new stretch of the High Line, stands the residential building HL23. A green project that covers fourteen floors in the heart of Chelsea, in close contact with the raised park that has become a modern landscape icon.



Modern constructions that interact with post-industrial ruins, reused buildings and new builds. This is the vision that unfolds before the eye as soon as you get up to the New York High Line, the former rail viaduct that has been transformed into a park, passing over the West Side from Chelsea to the Meatpacking District, nine metres up in the air. Amongst the numerous projects that are revitalizing the area – those by celebrity architects like Frank Gehry, Jean Nouvel, Annabelle Selldorf and still under construction, the Whitney Museum designed by Renzo Piano are worth a mention – is HL23, between 23rd Street and 10th Avenue. This fourteen story residential building is by Texan architect Neil Denari. The jutting lines of the environmentally friendly building slope towards the precise lanes of the second section of the HL, which stretches ten blocks north of Chelsea coming to an end at 30th street. With the glass and steel façade, the architect, who leads Los Angeles studio Neil M. Denari Architects (NMDA), has designed a building that gradually increases in floor area as it rises. The northern and southern façades are made up of full-length windows each with a single plate, whereas the eastern side is clad with a system of curved steel panels, which changes colour with the different hours of the day and the sunlight. The eleven homes (with a floor area that ranges from 170 to 335 square metres) are divided